

PRODUCT NO.

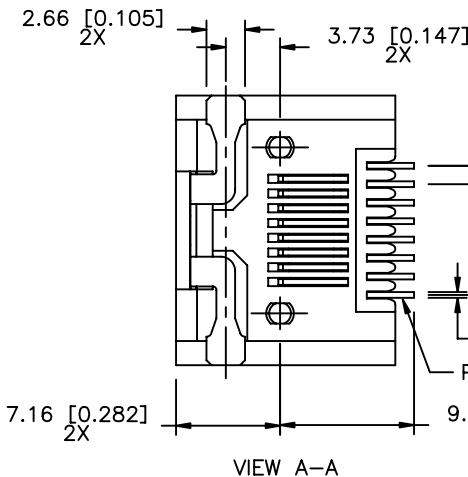
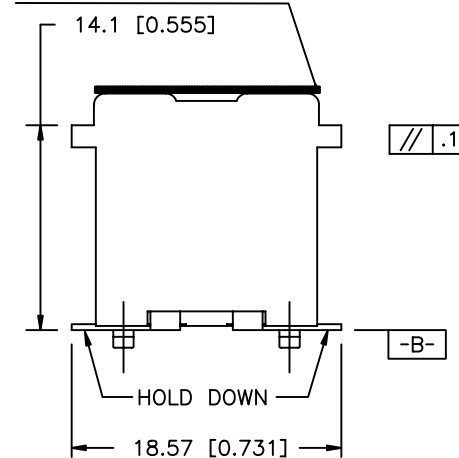
SEE TABLE

Tous droits strictement reserves. Reproduction ou communication a des tiers interdite sous quelque forme que ce soit sans autorisation ecrite du proprietaire. Propriete de c FCI. Droits de reproduction FCI.

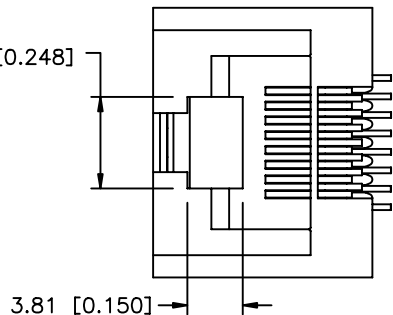


All rights strictly reserved. Reproduction or issue to third parties in any form whatever is not permitted without written authority from the proprietor. Property of FCI. Copyright FCI.

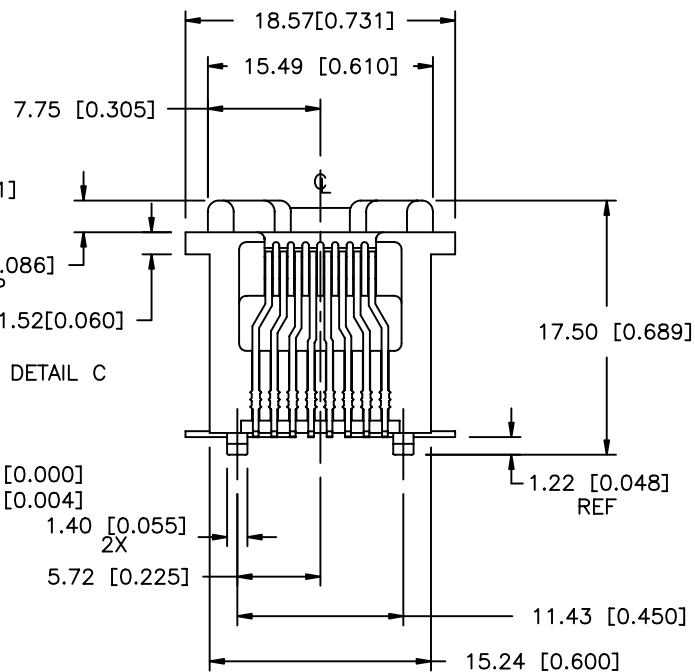
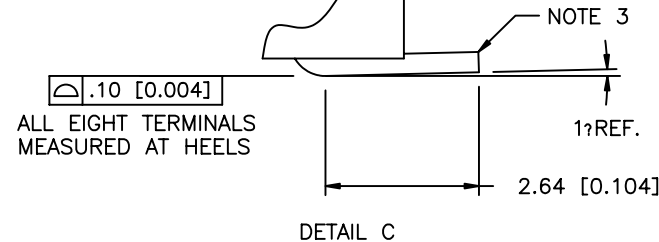
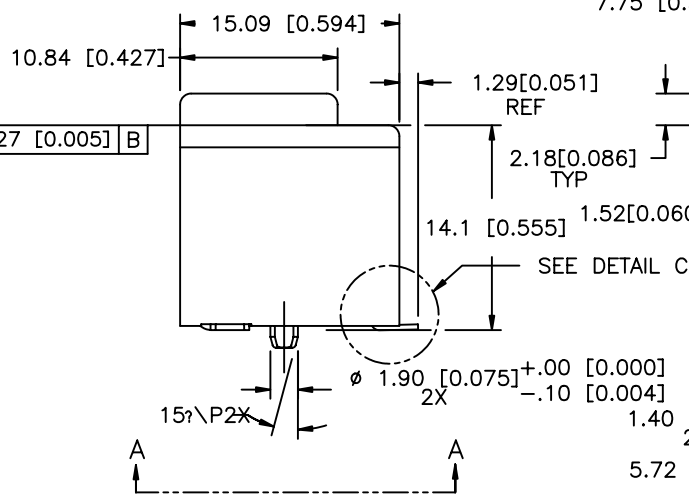
THE MYLAR SEE NOTE 7 ONLY FOR 87547-XXX1C/XXX1CLF



VIEW A-A



Surface texture symbol:  $\sqrt{\text{.127 [0.005] B}}$



mat'l. code				tolerances unless otherwise specified		CUSTOMER COPY	FCI www.fciconnect.com	
ltr	ecn no	dr	date	linear	.X±.3/.XX±.01	projection	title	
S	N08-0194	SH	09/08/08		.XX±.13/.XXX±.005		A-SMT ASSEMBLY VERT 8 POS	
K	V12666	LP	1/10/02		.XXX±.051/.XXX±.0020		product family	MOD JACK
L	V21834	LP	12/2/02	angles	0° ±2'	MM/INCH	size	dwg no
M	V04-0861	DAI	08/30/04	dr	L.POTTEIGER 12/2/02	scale	A4	87547
N	N05-0035	YS	02/18/05	enr	J.KONTOS 12/2/02	1:1		213
P	N05-0142	ZC	6/2/05	chr	J.KONTOS 12/2/02			sheet
R	N07-0217	WG	09/07/07	appd	J.KONTOS 12/2/02			1 of 2
sheet index	revision	R	R					
	sheet	1	2					

PRODUCT NO.

87547-XXXX

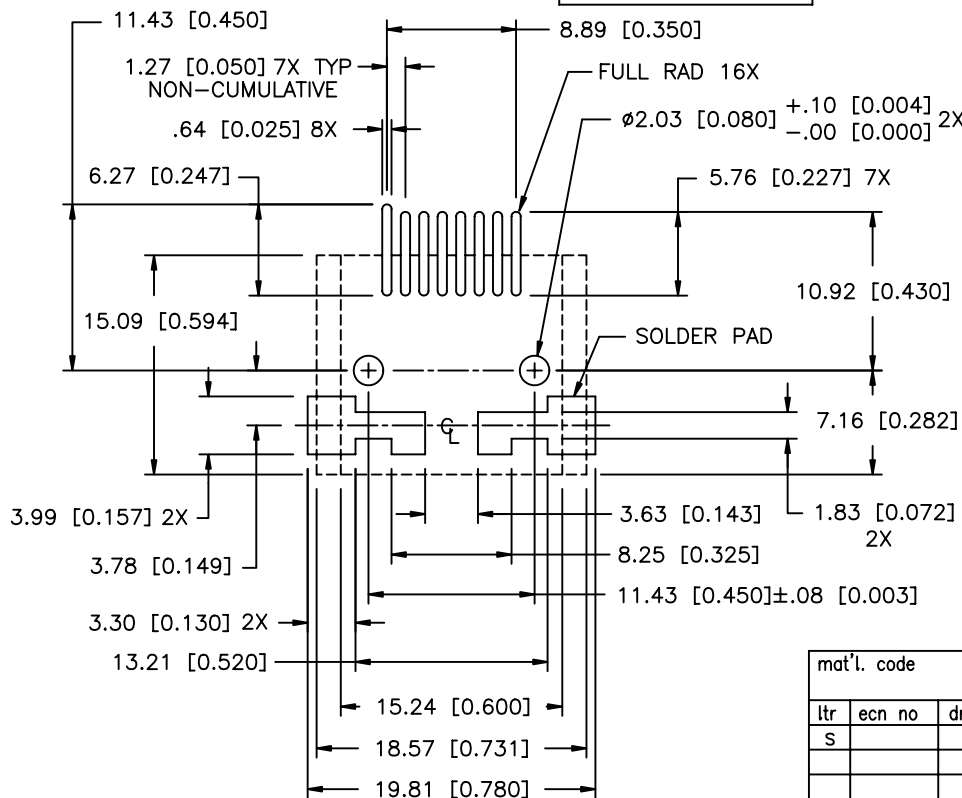
87547-XXXXLF

CONTACT PLATING OPTIONS	
1 = GXT .76µm [30µ"]	
2 = GOLD 1.27µm [50µ"]	
3 = PdNi .64µm [25µ"]	NOT TOOLED
4 = GOLD .76µm [30µ"]	

TERMINAL LOADING OPTIONS	
1 = FULLY LOADED 8 POSITION	
2 = POS. 1,2,7,8 LOADED, 4 POS.	
3 = POS. 3,4,5,6 LOADED, 4 POS	

COLOR	
1 = BLACK	
2 = RED	

PACKAGE OPTIONS		
BLISTER PACKAGE (TAPE & REEL)		24" REEL
1 = LOADED FACE UP		
BLISTER PACKAGE (TAPE & REEL)		NOT TOOLED
2 = LOADED FACE DOWN		
3 = PACKAGED IN TUBES		NOT TOOLED
4 = PACKAGED IN TRAYS		
BLISTER PACKAGE (TAPE & REEL)		15" REEL
5 = LOADED FACE UP		



RECOMMENDED PC BOARD L/O

NOTES:

- MATERIAL: HOUSING - THERMOPLASTIC V-0  
CONTACT - PHOSPHOR BRONZE
- PLATING: SOLDER TAILS - FOR 87547-XXXX : 2.54 µm [100 µIN] MIN. TIN LEAD  
OVER 2.54 µm [100 µIN] NICKEL  
FOR 87547-XXXXLF: 2 µm [80 µIN] MIN. PURE MATTE  
TIN OVER 1.27 µm [50 µIN] MIN. NICKEL  
HOLDDOWN - FOR 87547-XXXX: 2.54 µm [100 µIN] MIN TIN LEAD  
OVER 2.54 µm [100 µIN] NICKEL  
FOR 87547-XXXXLF: 2µm [80 µIN] MIN. PURE TIN  
OVER 1.27 µm [50 µIN] MIN. NICKEL  
CONTACT AREA PLATING - SEE CHART ON SHEET 2
- MAX "TOE UP" AT TIP = 0.127 [0.005]
- IF LF P/N PACKAGING MEETS GS-14-920 SPECIFICATION.
- THE HOUSING WILL WITHSTAND EXPOSURE TO 260°C PEAK TEMPERATURE FOR 40 SECONDS IN A CONVECTION, INFRA-RED OR VAPOR PHASE REFLOW OVEN.
- IF LF P/N THE PRODUCT MEETS EUROPEAN UNION DIRECTIVES AND OTHER COUNTRY REGULATIONS AS DESCRIBED IN GS-22-008.
- APPLY THE MYLAR ON THE P/N 87547-XXX1 WITH SUFFIX "C" FOR PICKING UP.  
FOR INSTANCE 87547-4111CLF .

mat'l. code		tolerances unless otherwise specified		CUSTOMER COPY		FCI www.fciconnect.com	
ltr	ecn no	dr	date	linear	.X±.3/.XX±.01	projection	title
S					.XX±.13/.XXX±.005		A-SMT ASSEMBLY VERT 8 POS
				angles	XXX±.051/.XXX±.0020	MM/INCH	product family MOD JACK
					0° ±2°	scale	code
				dr	L.POTTEIGER 12/2/02	1:1	213
				enr	J.KONTOS 12/2/02		size
				chr	J.KONTOS 12/2/02		dwg no
				appd	J.KONTOS 12/2/02		87547
sheet index	revision sheet						sheet 2 of

Tous droits strictement reserves. Reproduction ou communication a des tiers interdite sous quelque forme que ce soit sans autorisation écrite du propriétaire. Propriete de c FCI. Droits de reproduction FCI.



All rights strictly reserved. Reproduction or issue to third parties in any form whatever is not permitted without written authority from the proprietor. Property of FCI. Copyright FCI.